


Efforts to End Homelessness in New York City

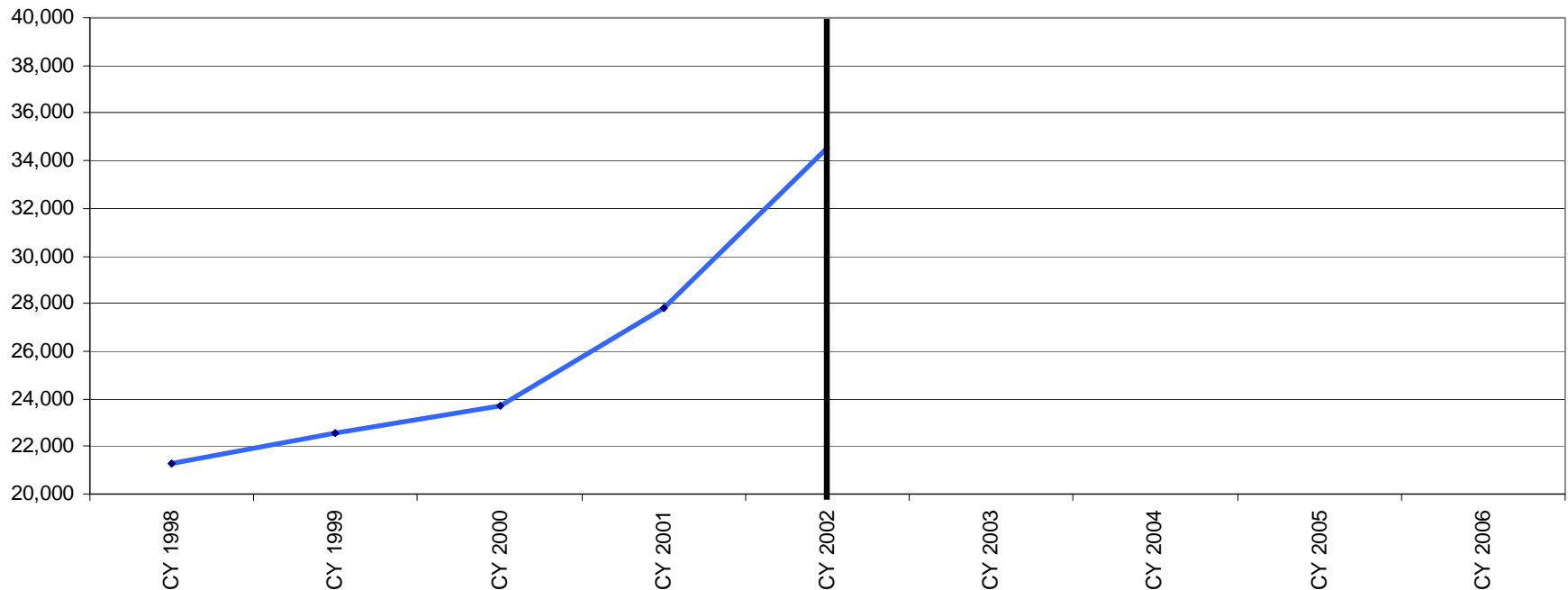
Presentation for the Ending Homelessness:
Housing First in Policy and Practice Conference
Worcester, Massachusetts
October 20, 2006



Shelter Population Growth

- Recession of Spring 2001
- Impact of the World Trade Center

Total Individuals in DHS Homeless Shelters

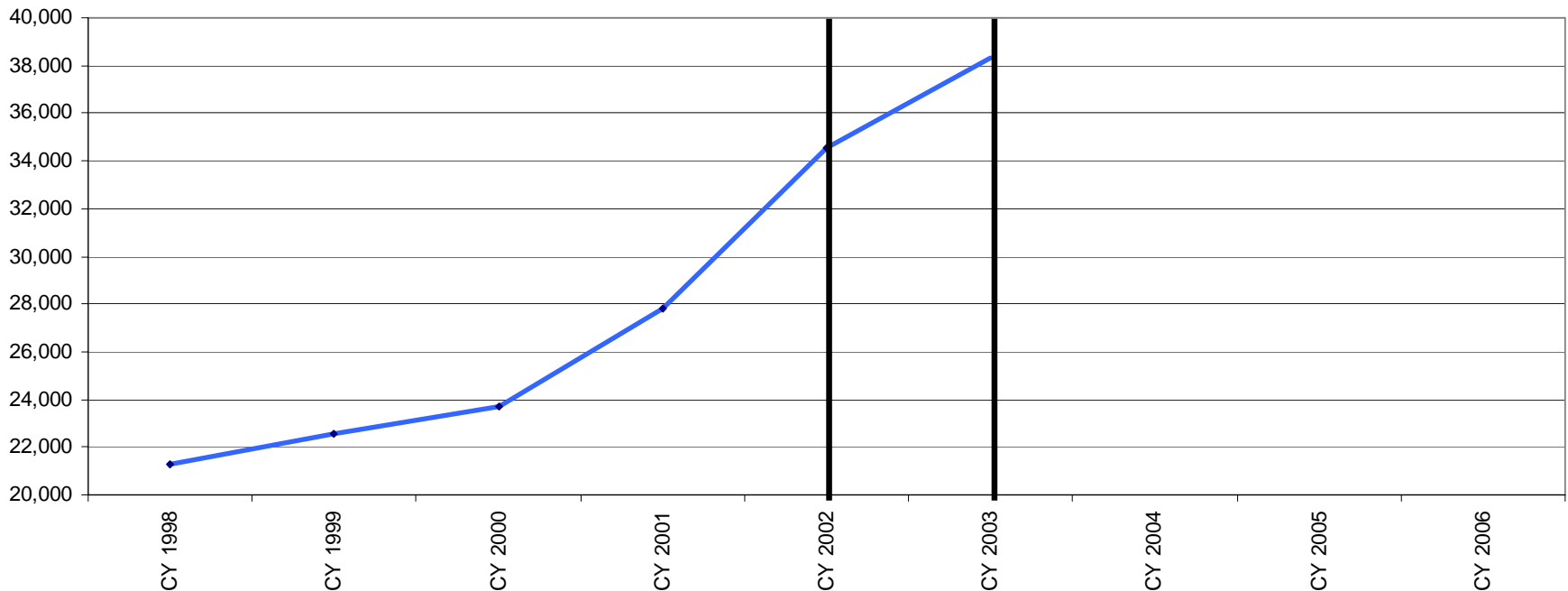


Source: DHS Administrative Data

First Year of the Bloomberg Administration: Growth of Homelessness Continues

- DHS develops its own strategic plan focused on:
 - Improving Shelter Management
 - Increasing Provider Accountability
 - Improving Use of Existing Resources

Total Individuals in DHS Homeless Shelters

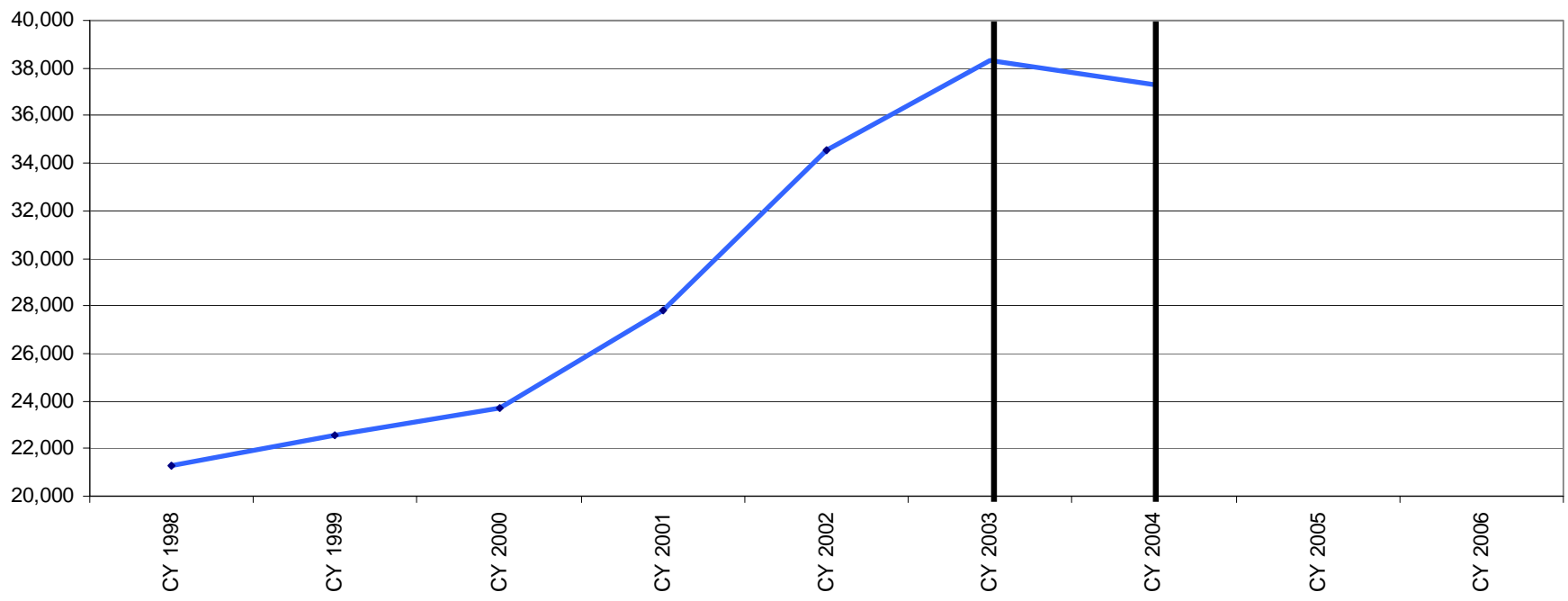


Source: DHS Administrative Data

Management Plan Takes Hold

- Shelter population stabilizes primarily due to:
 - Increased family shelter exits given the Housing Placement Process
- Limits of agency-only approach become clear

Total Individuals in DHS Homeless Shelters



Source: DHS Administrative Data

Bloomberg Commitment

5 Year Citywide Comprehensive Effort

- Ending Chronic Homelessness
- Reducing Homelessness by two-thirds in 5 years

Five Year Targets

➤ Prevention:

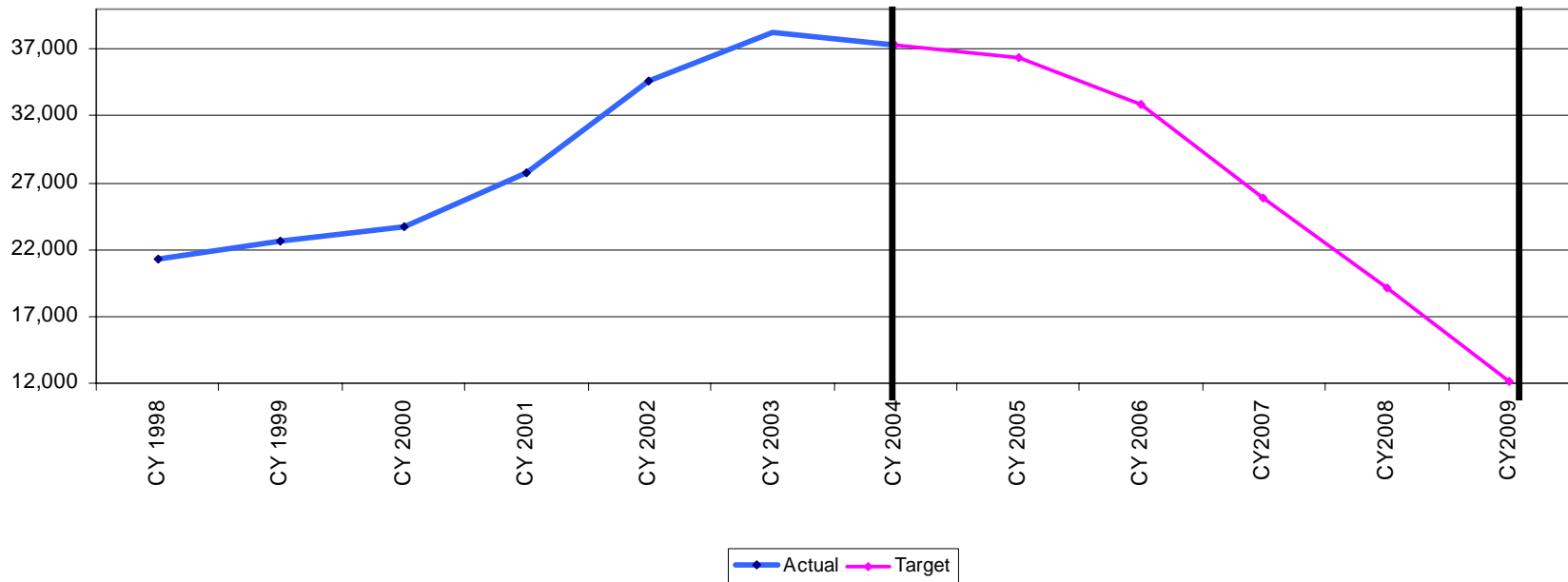
- HomeBase Program
- Provider and Client Responsibility

➤ Data Tracking and Evaluation

➤ Housing:

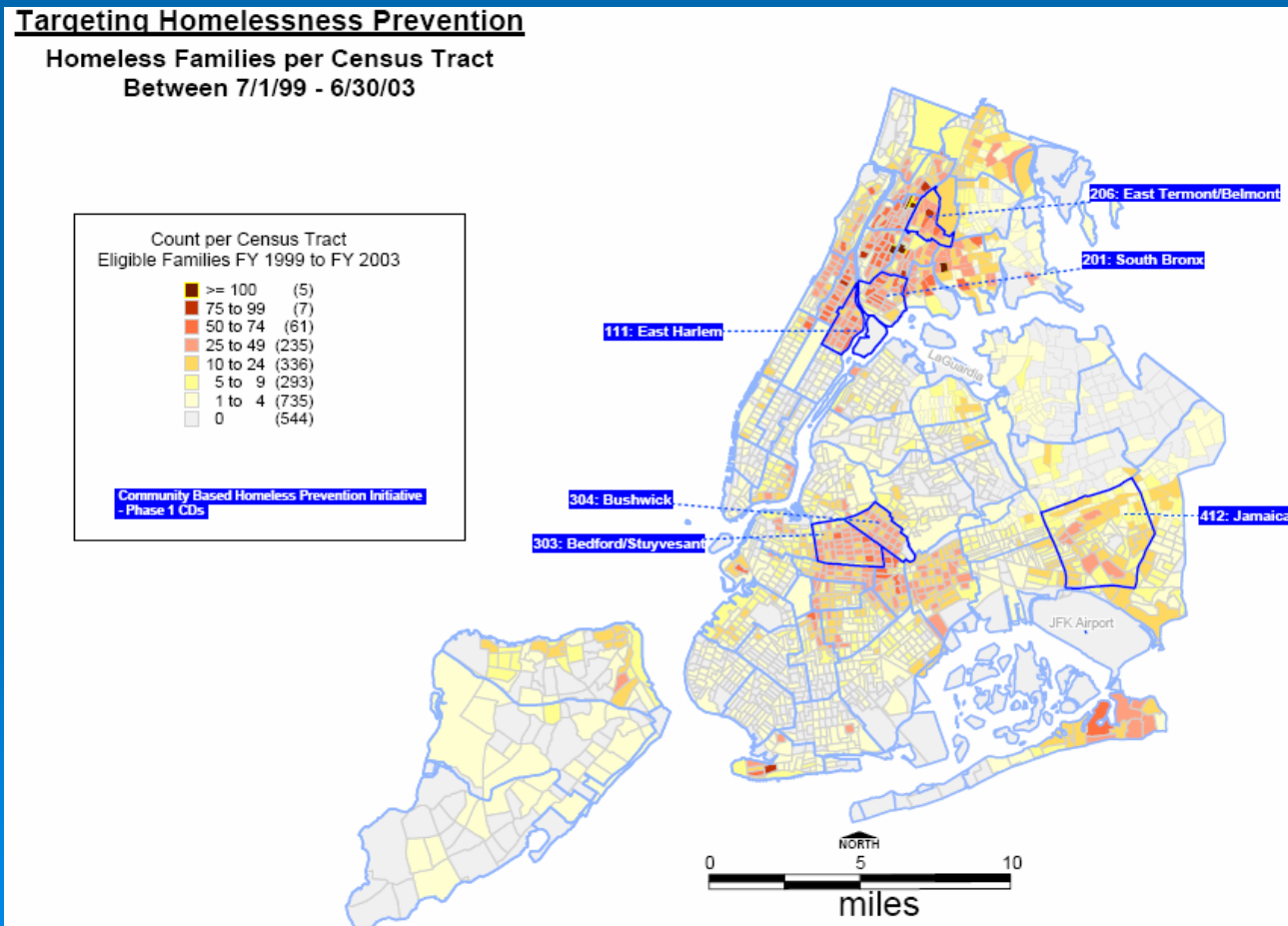
- HSP
- NY/NY II and III
- Affordable Housing

Total Individuals in DHS Homeless Shelters: Actual and Target



Data Tracking to Target Prevention

Based on census data between 1999 and 2003, we identified 6 NYC communities that account for 25% of all families entering shelter



Community-Specific At-Risk Profile

For Example: In CD 6 of the Bronx, we identified the following characteristics of the population at risk of becoming homeless:

The Primary Tenant

- Older couples
- Older females with adult children
- Permanently housed/ lease holder
- Experiencing landlord discord
- Limited income and work history
- Limited education and skills
- Eligible for legal services for housing
- Poor budgeting and money management skills

The Secondary or Doubled Up Tenant

- Younger single adults
- Single females with small children
- Transient, with negative or limited rental histories
- Experiencing household discord
- Limited income and work history
- Limited education and skills
- Ineligible for legal services for housing

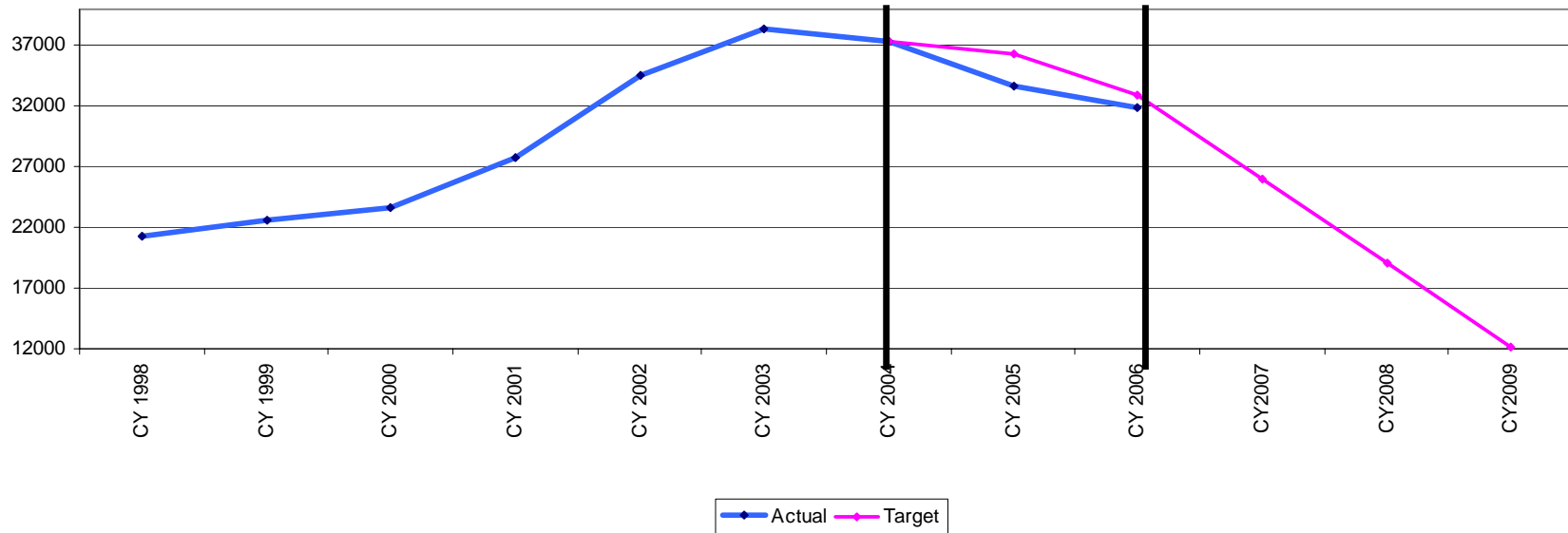
Plan Takes Hold

HomeBase: **8% decrease** in high need target communities compared to a **7% increase** in control communities*

Housing: Increased placements of single adults into housing

Housing: New Rental Assistance plan moves 8,000 families from shelter

Total Individuals in DHS Homeless Shelters: Actual and Target



Source: DHS Administrative Data. Actual 2006 data is based on data available through September.

* First quarter of 2006

What Happened? It's Not Easy

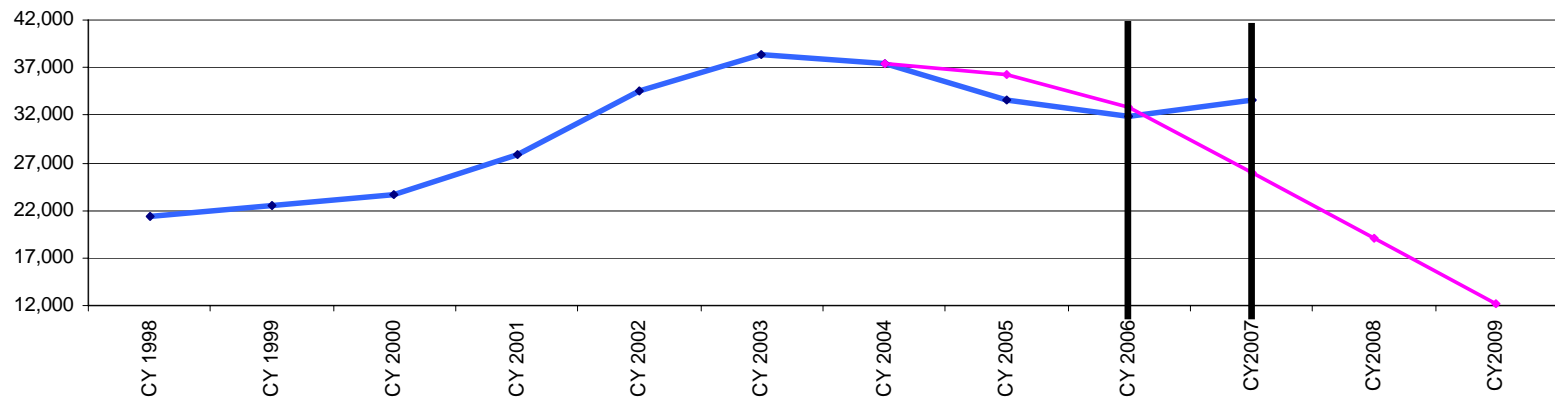
➤ More Entrants

- Friendlier Front Door?
- Better Assessments?

➤ Fewer Move Outs

- Complacency?
- Insufficient Consequences?
- Landlord Demands?

Total Individuals in DHS Homeless Shelters: Trend and Target



Source: DHS Administrative Data

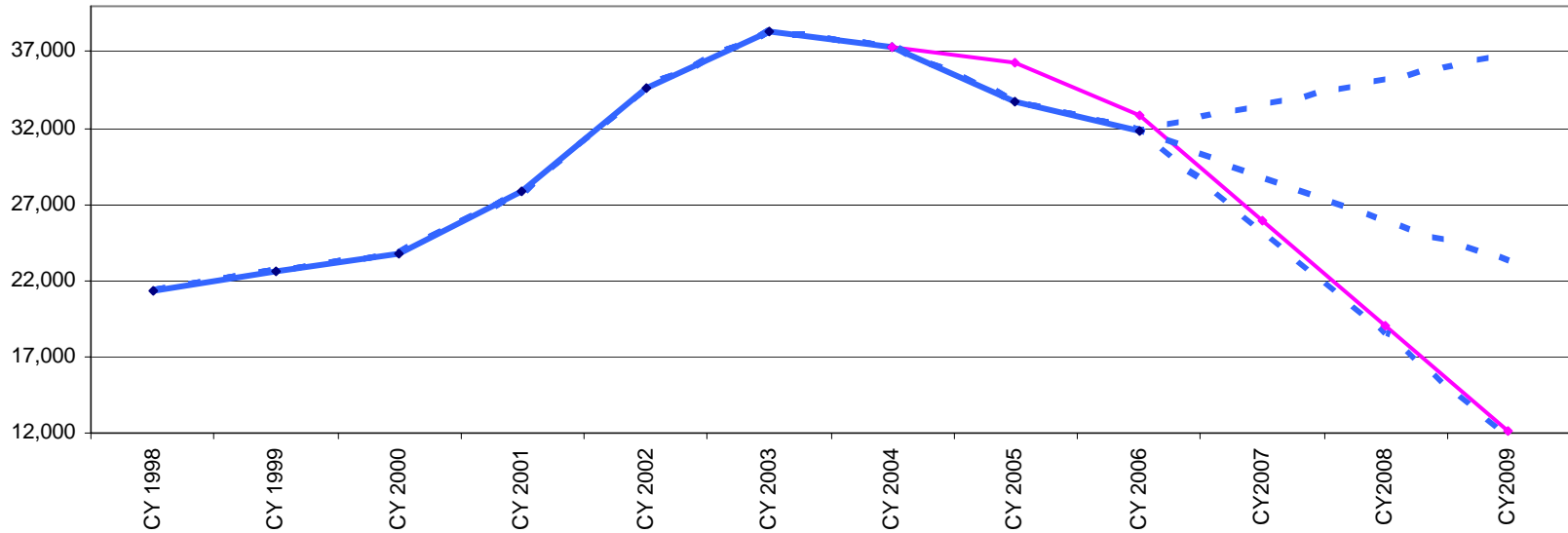
Recent Trend Data is based on information from the 3rd quarter of 2006 but is not an official calculation of CY 2007

◆ Trend ◆ Target

Next?

Homelessness is a complex and dynamic system

Total Individuals in DHS Homeless Shelters



Source: DHS Administrative Data.
Possibility Calculations are not official

Actual Target Possibilities